

# REINFORCEMENT ELEMENTS



Reinforcing elements are usually ready-to-install parts for the concrete element production.

Our elements ensure a high quality standard and gives the customers more effectivity in the production or on the construction site.

Our possibilities starts by simple forms, up to complex elements.

## PRODUCT SPECIFICATION

Grade	» B500A	or	B500B
Ductility	» Normal		High
Fabricated	» According to DIN 17660 or the customer's requirements		
Availability	» On request		
Certified for following countries	» CH   CZ   D   NL   PL		

# REINFORCEMENT ELEMENTS

## REINFORCEMENT FOR COVER AND INTERMEDIATE SLABS / INTERMEDIATE SAFETY SLABS

according to DIN V 4034-1/2 or customer's requirements

Use: in road construction as a manhole cover



Ø Cover Slabs with or without opening:	from 800 - 2500 mm
Ø Opening:	625 - 800 mm
Ø Intermediate slabs with opening:	from 1500 - 2500 mm
Ø Opening:	1000-1200 mm
Number of openings:	up to 3
Design :	according to customer's requirements
Welding technique:	MAG or RP welded

## ROUND MESH

Use: for use as top or bottom mat for cover slabs or as a container base



Max. element diameter:	3000 mm
Ø Wire:	5 - 14 mm
Design types:	with and without hole, with and without ring
Design:	according to customer's requirements
Welding technique:	MAG- or RP welded

# REINFORCEMENT ELEMENTS

## COVER PLATE REINFORCEMENT RINGS

Use: as cover for cover slabs



Max. dimensions:  
Ø Wire:

product Ø 1500 mm  
4 - 12 mm

Design:

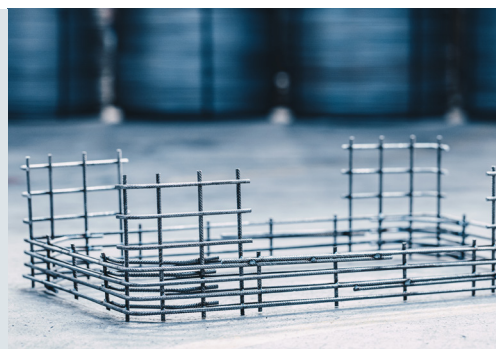
according to customer's requirements

Welding technique:

butt-welded or RP welded

## CABLE CONSTRUCTION DUCTS

Use: lead-through or branching of cables and pipes



Dimensions:  
Ø Wire:

according to customer's requirements  
6 - 14 mm

Design:

according to customer's requirements

Welding technique:

MAG- or RP welded

# REINFORCEMENT ELEMENTS

## REINFORCEMENT RINGS AND FRAMES



### REINFORCEMENT RINGS

Max. dimension:	product Ø 3200 mm
Ø Wire:	4 - 12 mm
Design:	single / double ring
Welding technique:	butt-welded or overlapping
Special shapes:	<ul style="list-style-type: none"><li>- with spacer</li><li>- with small feet</li><li>- with hooks</li></ul>

### REINFORCEMENT FRAMES

Max. dimension:	product 2700 x 2700 mm
Ø Wire:	4 - 12 mm
Design:	single / double frame
Welding technique:	butt-welded or overlapping
Special shapes:	<ul style="list-style-type: none"><li>- with spacer</li><li>- with small feet</li><li>- with round front</li></ul>

# REINFORCEMENT ELEMENTS

## PALISADE REINFORCEMENT

Use: for landscaping



Max. dimension :  
Ø Wire:

2500 mm length  
4 - 10 mm

Design:

square, polygonal, round or customised

Welding technique:

MAG- or RP-welded

## L-SHAPE CONCRETE ELEMENTS

Use: slope stabilisation



Height:

55 - 305 cm or according to customer's requirements up to 455 cm

Load case

5 KN/m<sup>2</sup> and 33 KN/m<sup>2</sup>

Design:

according to customer's requirements

Welding technique:

MAG- or RP-welded

# REINFORCEMENT ELEMENTS

## SPECIAL REINFORCEMENT

Special reinforcement according to customer's requirements

Welding technique:      MAG- or RP-welded

